

SENZAFINECLOSET

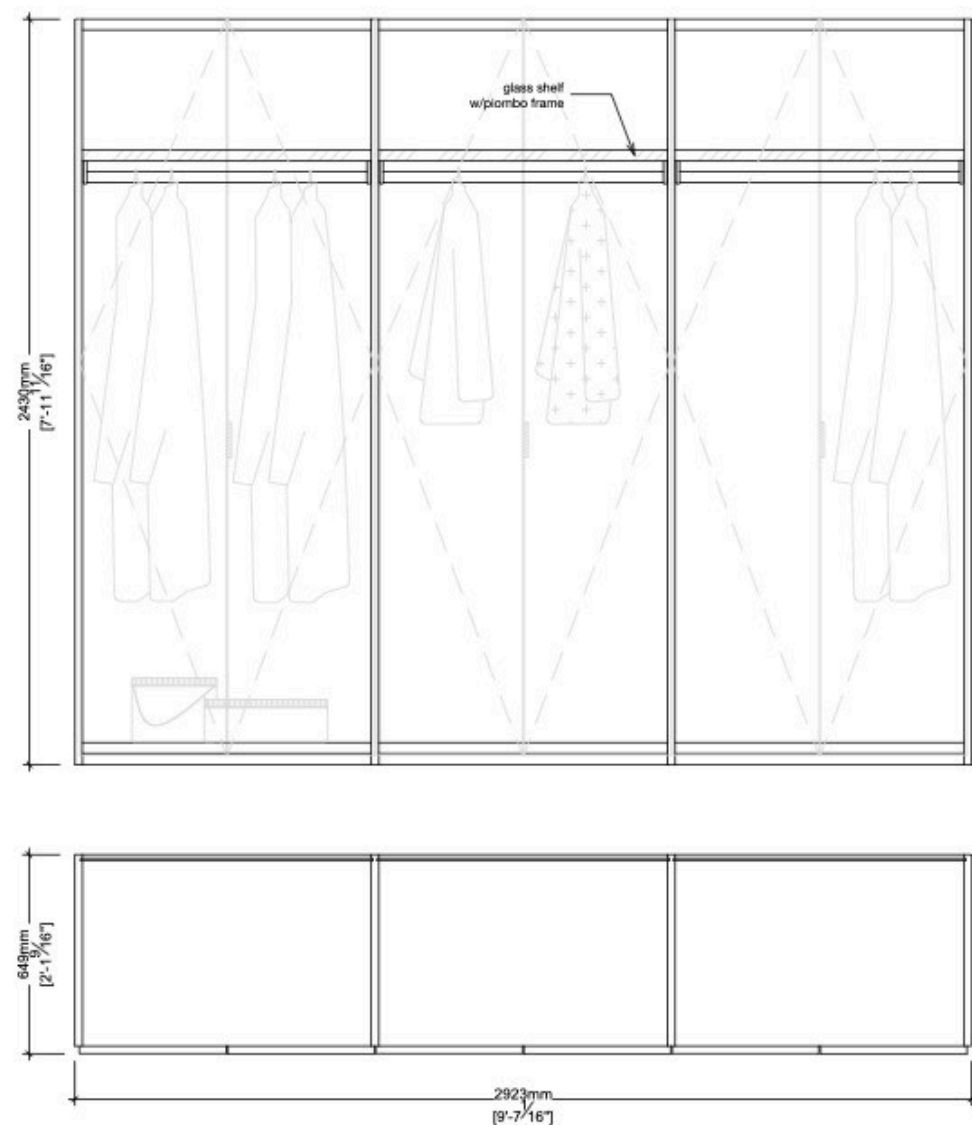
Display Sale Pricing*

	Retail	Display
Closet	\$110,700	\$7,500

Senzafine Walk-In Closet by Poliform

Senzafine Walk-In (closet without doors) in Cenere Oak melamine with Piombo matte lacquer and Latte TechnoLeather details. Left to right: Open shelving with two drawers below, double hanging space with pull-out tray and skirt hanger, shirt storage with pull-out valet and four drawers below, double hanging space with pull-out tray and pants hanger, hanging space with laundry below, double hangin space for corner. LED lighting throughout. Walk-In closet height: 7' - 11 11/16" H.

*please contact matt@studiocomo.com or jenny@studiocomo.com for purchase details.



SENZAFINECLOSET

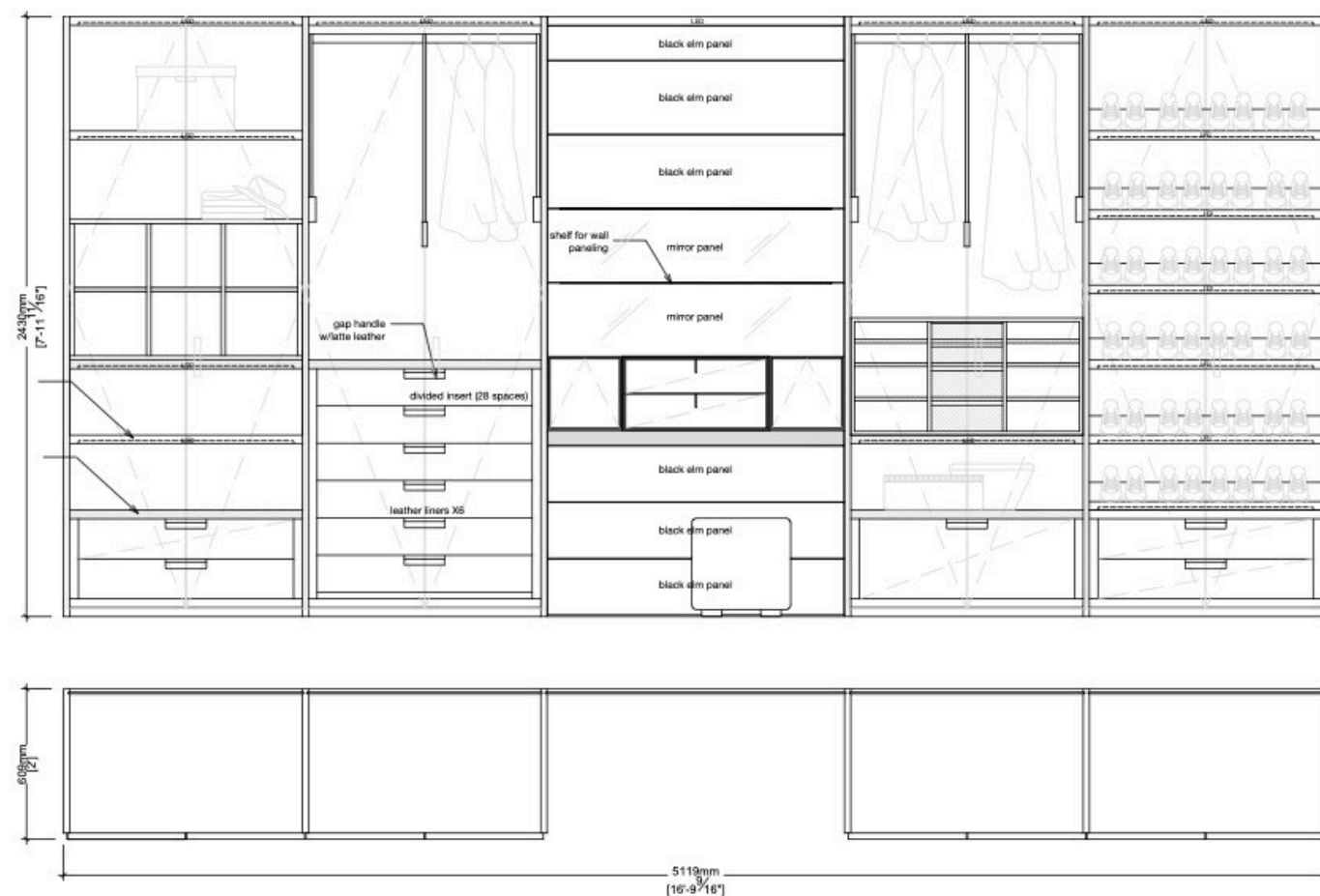
Display Sale Pricing*

	Retail	Display
Closet	\$110,700	\$9,500

Senzafine Glass Wardrobe Island by Poliform

Senzafine full-height island wardrobe in Transparent Reflecting glass. Three sections of open hanging with all sides in glass. LED lighting throughout. Wardrobe height: 7' - 11 11/16" H.

*please contact matt@studiocomo.com or jenny@studiocomo.com for purchase details.



SENZAFINECLOSET

Display Sale Pricing*

	Retail	Display
Closet	\$110,700	\$12,500

Senzafine Wardrobe by Poliform

Senzafine wardrobe (closet with doors) in Cenere Oak melamine and New Entry doors in Nero frosted glass. Inner components in Cenere Oak melamine, Fume glass, and Latte TechnoLeather. Left to right: Open shelving and handbag storage with two drawers below, pull-down hanging rail with six drawers below, open vanity with leather-wrapped storage and mirror back panels, hanging rail with shirt storage and deep drawer below, shoe storage with two drawers below. LED lighting throughout. Wardrobe height: 7' - 11 11/16" H.

*please contact matt@studiocomo.com or jenny@studiocomo.com for purchase details.

STUDIOCOMO

2535 Walnut Street Denver, CO studiocomo.com 303-296-1495