



Sideboard in solid wood and blockboard, with iron or wooden frame, characterized by drawers assembled with dovetail joints and doors. Two fine iron legs raise it from the ground.

**STANDARD COMPOSITION:** 2 DOORS - 2 ADJUSTABLE SHELVES - 2 DRAWERS

**ADDITIONAL ACCESSORIES:** SEE TECHNICAL NOTES

# RIALTO FLY

**STANDARD VERSION:** DOORS AND DRAWERS WITH PUSH-PULL SYSTEM, ON METAL RUNNERS; WOODEN BACK

ATTENTION: FOR RIALTO FLY METAL THE IRON FRAME IS ALREADY INCLUDED IN THE PRICE (BACK EXCLUDED)

CODE	SIZE	STRUCTURE	FRONTS					
			A1	A2	A3	A4	A5	A6
RIALTO_FLY WOOD	W.220 x D.45 x H.75	WALNUT WITH AND WITHOUT KNOTS	■					
		OAK WITH AND WITHOUT KNOTS		■	■	■	■	■
		NEUTRO OAK WITH AND WITHOUT KNOTS			■			
		PIGMENTED OAK WITH AND WITHOUT KNOTS				■		
		TABACCO OAK WITH KNOTS					■	
RIALTO_FLY METAL	W.220 x D.45 x H.75	B2	■	■	■	■	■	■
		B3	■	■	■	■	■	■

## AVAILABLE FINISHES:

- A1:** walnut without knots, walnut with knots  
**A2:** oak without knots, oak with knots  
**A3:** oak without knots finish: whitened, mystic black, vintage, neutro  
 oak with knots finish: whitened, mystic black, vintage, neutro  
**A4:** oak without knots pigmented: ash grey, white milk, total black  
 oak with knots pigmented: ash grey, white milk, total black  
 N.B.: pigmented surfaces only outside, inside oak  
**A5:** oak: flamed london, with knots vulcano, with knots tabacco  
**A6:** briccola  
**B2:** lacquered iron: matt transparent, irondust, RAL (only selected colours)  
**B3:** lacquered iron matt brushed effect: aged copper, aged bronze, stainless steel, titanium  
 lacquered iron oxidised effect

FEASIBILITY BACK OPTIONS	
A4	■
B2	■
B3	■

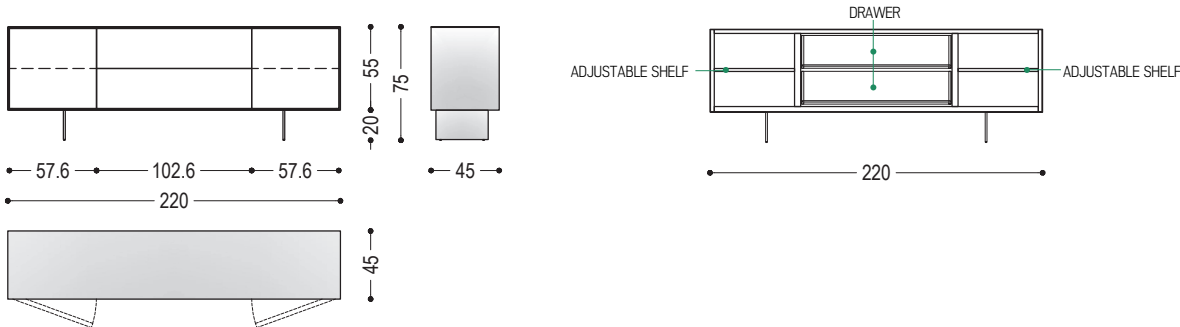
## AVAILABLE FINISHES:

- A4:** oak without knots pigmented: ash grey, white milk, total black  
 oak with knots pigmented: ash grey, white milk, total black  
 N.B.: pigmented surfaces only outside, inside oak  
**B2:** lacquered iron: matt transparent, irondust, RAL (only selected colours)  
**B3:** lacquered iron matt brushed effect: aged copper, aged bronze, stainless steel, titanium  
 lacquered iron oxidised effect

FEASIBILITY FRONTS OPTIONS	
E4	■

## AVAILABLE FINISHES:

- E4:** printed glass



WOOD

A1



walnut without knots



walnut with knots

A2



oak without knots



oak with knots

A3



oak without knots finish:  
whitened



oak without knots finish:  
mystic black



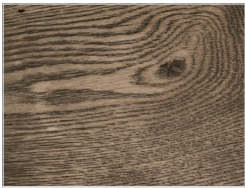
oak without knots finish:  
vintage



oak without knots finish:  
neutro



oak with knots finish:  
whitened



oak with knots finish:  
mystic black



oak with knots finish:  
vintage



oak with knots finish:  
neutro

A4



oak without knots pigmented:  
ash grey



oak without knots pigmented:  
white milk



oak without knots pigmented:  
total black



oak with knots pigmented:  
ash grey



oak with knots pigmented:  
white milk



oak with knots pigmented:  
total black

A5



oak:  
flamed london



oak:  
with knots vulcano



oak:  
with knots tabacco

# RIALTO FLY | AVAILABLE FINISHES

A6



briccola

## IRON

B2



lacquered iron:  
matt transparent



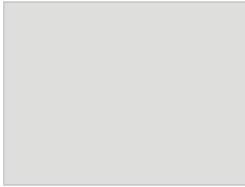
lacquered iron:  
irondust



ferro laccato:  
RAL - 1013\_OYSTER WHITE



ferro laccato:  
RAL - 3020\_TRAFFIC RED



ferro laccato:  
RAL - 7035\_LIGHT GREY



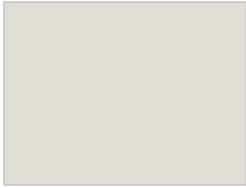
ferro laccato:  
RAL - 7037\_DUSTY GREY



ferro laccato:  
RAL - 8019\_GREY BROWN



ferro laccato:  
RAL - 9001\_CREAM WHITE



ferro laccato:  
RAL - 9002\_GREY WHITE



ferro laccato:  
RAL - 9005\_JET BLACK



ferro laccato:  
RAL - 9010\_PURE WHITE



ferro laccato:  
RAL - 9016\_TRAFFIC WHITE

B3



lacquered iron, matt brushed effect:  
aged copper



lacquered iron, matt brushed effect:  
aged bronze



lacquered iron, matt brushed effect:  
stainless steel



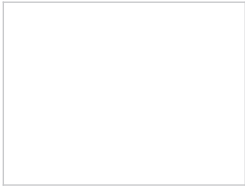
lacquered iron, matt brushed effect:  
titanium



lacquered iron, oxidised effect

## GLASS

E4



printed glass \*\*\*

\*\*\* **N.B.:** possibility of printing any picture on the glass only after approval of feasibility and pricing by Riva sales department.

# PIECES OF FURNITURE | TECHNICAL NOTES

## DOORS AND DRAWERS OPENING SYSTEM

Add the following surcharge in case of non-standard opening system for drawers and doors.

SURCHARGE (price for one door/drawer)	
push-pull system	■
grooved handle	■

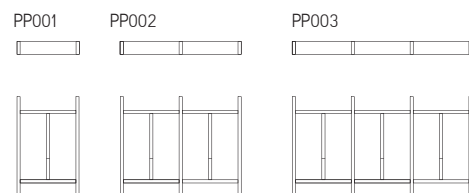
## CUTLERY TRAY

Trays can be customized upon request: feasibility and surcharge need to be confirmed by our sales department.  
Available finishes: walnut, oak, cherry, maple and elm.

CUTLERY DIVIDERS	
PP001 - for drawer W. 30 cm	■
PP002 - for drawer W. 60 cm	■
PP003 - for drawer W. 90 cm	■

### N.B.:

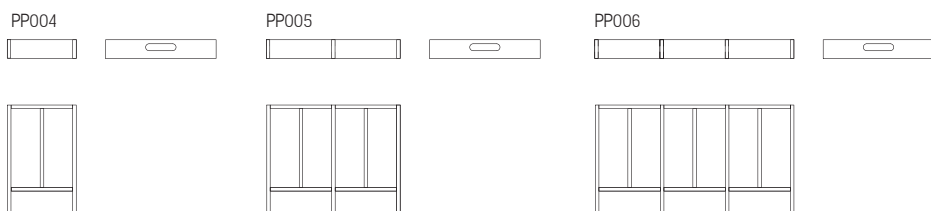
Cutlery dividers laid in the drawer.



CUTLERY TRAY	
PP004 - for drawer W. 30 cm	■
PP005 - for drawer W. 60 cm	■
PP006 - for drawer W. 90 cm	■

### N.B.:

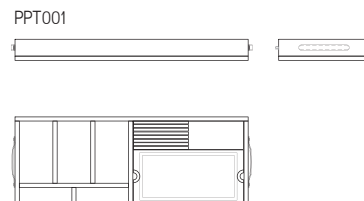
Cutlery tray with lateral handles for easy use.



CUTLERY TRAY WITH CUTTING BOARD	
PPT001 - for drawer W. 60 cm	■

### N.B.:

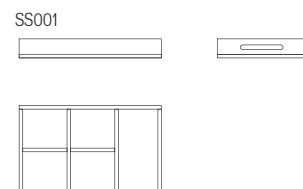
Cutlery tray with lateral handles for easy use, composed by: cutlery dividers, beech cutting board and knives holder.



TRAY FOR FAR EAST ACCESSORIES	
SS001 - for drawer W. 60 cm	■

### N.B.:

Set with dividers for far east kitchen with lateral handles for easy use.



DRAWER DIVIDERS

WINE SET  
Set for drawer with accessories for wine tasting (professional corkscrew, spare tips, steel cap, thermometer, pourer, drip ring, foil cutter).  
Size W.29,5 x D.22,5 cm.

WINE SET	
walnut/oak	■
teak	■



SPIRITS SET  
Set for drawer with accessories for spirits tasting (4 small glasses and 4 marble chilling cubes).  
Size W.20 x D.22,5 cm.

SPIRITS SET	
walnut/oak	■



BOTTLE SPACES

Wooden grid for space with size W.56 x H.35 cm; depth of the grid around 33 cm.  
Charachterized by 9 spaces around 9x9 cm each, for bottles positioned horizontally, and one vertical module around W.19 x H.31 cm.  
The grid can be customized upon request: feasibility and surcharge to be confirmed by our sales department.

BOTTLE SPACES	
walnut/oak	■



GLASS HOLDERS

Composed by 3 stainless steel holders.  
Holders L. 32 cm can hold max. 3 glasses with diameter of 8,5 cm, while holders L. 46,6 cm max. 4 glasses.  
This set needs to be fixed to the top shelf or to another fixed shelf.  
For more details please check the technical drawing.  
Upon request:  
- available in other sizes.  
- position of the 3 elements at different distance.

GLA SS HOLDERS	
set 3 elements L.32 cm	■
set 3 element L.46,6 cm	■

