

SAINT - GERMAIN

JEAN-MARIE MASSAUD 0



DESCRIPTION

Saint-Germain is a system of sofas and upholstery elements with sinuous and sensual shapes. An enveloping and round style recurs in all the modules of the series, which features linear sofas, L-shaped configurations, or organic compositions. The covering, in fabric or leather, enhances the volumes, full and voluptuous. Designed by Jean-Marie Massaud, Saint-Germain transforms any space into a warm and familiar landscape, giving a pleasant sensation of domestic comfort.

Poliform

SAINT - GERMAIN

JEAN-MARIE MASSAUD ()



TECHNICAL DESCRIPTION

TIPOLOGY

sofa

STRUCTURE

woods and by-products

SEAT CUSHION

multi-density moulded polyurethane

PRE-COVER

otton cloth with feathers

FINAL COVERING

removable in fabric or leather

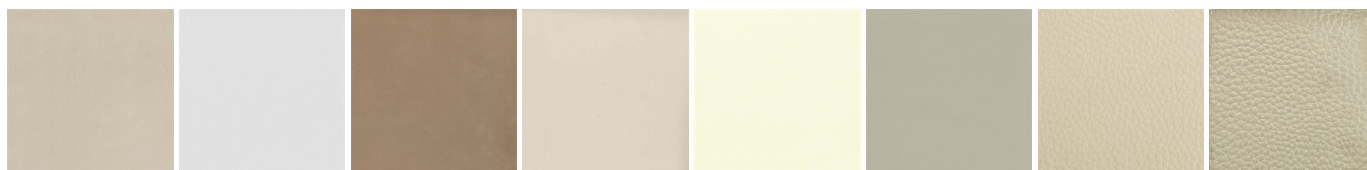
FEET

adjustable, metal painted

Poliform

SAINT - GERMAIN

FINISHINGS\SOFA COVERING\LEATHER (8)



NABUK
LEATHER

PELLE
SPECIAL

AGED-
LOOKING
LEATHER

COLORS
LEATHER

SPRING
LEATHER

SOFT
LEATHER

LEATHER
SILK

DEEP

SAINT - GERMAIN

FINISHINGS\SOFA COVERING\FABRIC (37)



BREST

ATLANTA

CALEO

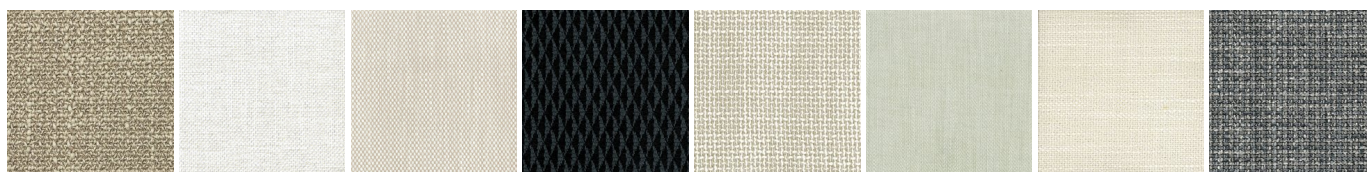
CHIOS

ERACLEA

ASPEN

LIMA

SIVIGLIA



ANTEA

CALEDONIA

CORDOBA

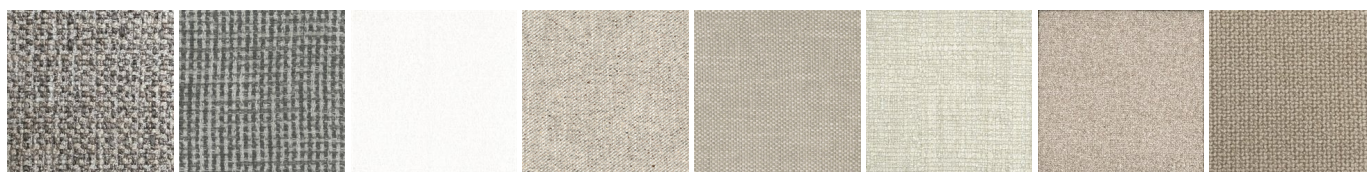
CORINTO

INDRA

ITACA

KUSHIRO

LIPSI



MICENE

MILOS

OLIMPIA

OXFORD

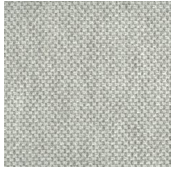
RABAT

SPARTA

AGADIR

ARCADIA

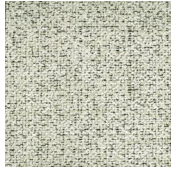
Poliform



ARGO



HANNOVER



KITAMI



NAXOS



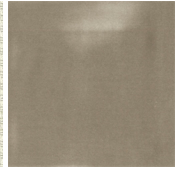
NAYORO



ORLEANS



PAROS



PERSIA



SKYROS



LERO



ZANTE



NANCY



SIRO

SAINT - GERMAIN

FINISHINGS\FEET\ BROWN NICKEL MAT PAINTED (1)



BROWN
NICKEL MAT
PAINTED