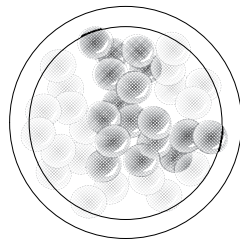


±120 (4.7')



53
(2')

up to
3000
(10')
standard

up to
30500
(100')
custom

625
(24.6")

755
(29.7")

approx 91.4kg (201lb)

- PENDANTS: thirty-six
- MOUNTING: white powder coated round canopy 755mm (29.7") in diameter x 53mm (2") deep
- LAMPING: 1.5w LED (2500K or 3500K) / 10w xenon (2600K)
- COAX: fixed lengths. 3000mm (10') standard / up to 30500mm (100') maximum
- MATERIALS: blown glass, copper mesh, braided metal coaxial cable, electrical components, white powder coated canopy
- WEIGHT: approximately 91.4kg (201lb)
- POWER: integral
- SUPPLIES:

DESCRIPTION

84.36 is a random configuration of thirty-six 84 pendants hung from a round canopy. The drop lengths of the pendants are randomized between a client specified range of heights to variously cluster and scatter. The result is an ambient installation or field of light.

A white glass bubble is captured inside a fine copper mesh basket and then plunged into hot clear glass. Air is blown into the matrix to gently push the white glass through the mesh, creating a delicate pillowed form that is suspended inside the thick outer layer of clear glass. Sometimes the copper mesh basket folds and crinkles, adding specificity to each piece.

NOTES

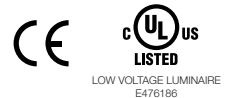
- + Purchase replacement lamps online at www.bocci.com/shop/bulbs
- + Unless otherwise noted when ordering, all chandeliers will be outfitted to be xenon compatible.
- + Please specify the colour temperature when ordering LED fixtures
- + As an alternative to built-in Power supplies, Bocci recommends mounting Power supplies remotely in an easily accessible and hidden location for ease of long-term maintenance.

US Patent Pending
EU Patent # 003611144-0001 to 0004

Made in Vancouver, Canada

Vancouver
sales@bocci.com
www.bocci.com

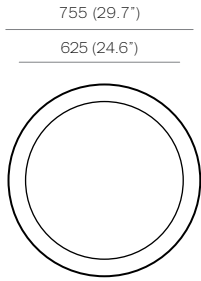
Berlin
europe@bocci.com
www.bocci.com



ROUND

84.36

Design by Omer Arbel
PRODUCT SPECIFICATION

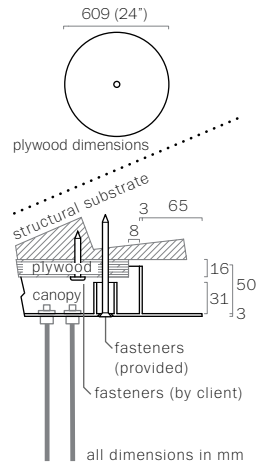


1

Note: All connections and power supplies are tested by our technicians before shipping. However, it is possible for ports/ power supplies to come loose or damage during shipping.

Test each port before installing canopy to ceiling to catch any loose connections or faulty power supplies.

Measure and mark the light fixture canopy position on the ceiling



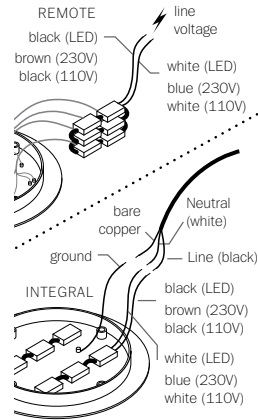
2

Note: The client is responsible for providing a robust 16mm (5/8") plywood backing or wood blocking to securely anchor to the structural substrate.

Connections from the plywood to the structural substrate are the client's responsibility.

Measure the plywood so that it fits within the canopy side walls (refer to detail above).

Anchor the plywood backing to the structural ceiling substrate.



3

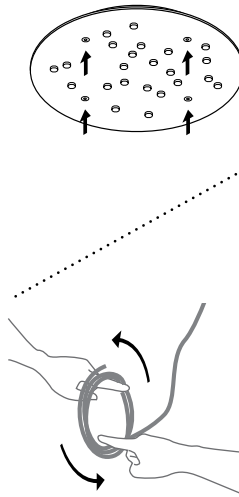
Connect power supplies to line voltage.

Xenon (110V) or LED: connect the black wire to black and white wire to white wire.

Xenon (230V): connect black wire to brown wire and white wire to blue wire.

For the ground connection, connect the green wire with yellow stripe to the bare copper wire or green wire in the junction box.

Note: Bocci strongly recommends mounting power supplies remotely in a close, accessible and hidden location for ease of long term maintenance. Installation to be done by certified personnel to ensure compliance with the code.



4

Anchor canopy into the plywood backing using the fasteners provided.

Turn power to fixture on.

Very carefully uncoil the braided coaxial cable in a spool like manner. Insert your index fingers into opposite sides of the roll then rotate your fingers around each other to unroll the coaxial cable.

Use patience: allow the cable to uncoil completely to avoid kinks.

5

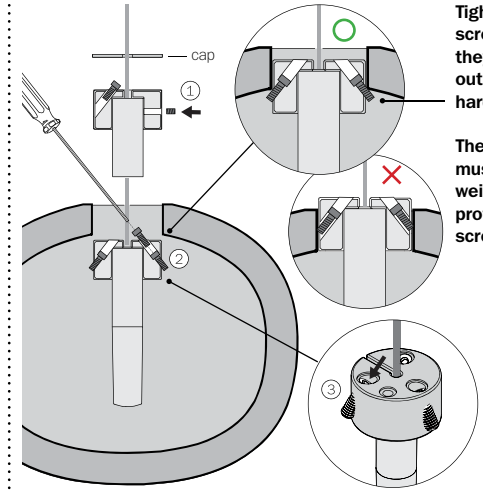
Attach the lamp holder to the pendant hardware with set screw provided.

Plug the lamp into lamp socket. Do not touch the lamp with your bare hands.

Each pendant terminates in a "headphone jack" type connector, which plugs into a receiving receptacle in the canopy. Clients are encouraged to compose their own pendant configuration on site, thus creating a truly unique fixture. After plugging in each pendant, turn the threaded sheath into place by hand ensuring that it is adequately tightened. Tools are not required.

Check that each lamp is working properly as you go along.

Note: when using a dimmer use only low voltage electronic dimmer



6

Insert the pendant hardware assembly into the pendant.

Tighten the 3 screws until they are fully engaged (refer to illustration above, step 3)

Give it a gentle pull to ensure the screws are locked onto the pendant.

Slide cover cap onto the coaxial cable and place into the inset portion of the pendant hardware.

7

Clean fingerprints from surfaces.

For additional assistance, please contact Bocci:

Vancouver
sales@bocci.com
www.bocci.com

Berlin
europe@bocci.com
www.bocci.com

US Patent Pending
EU Patent # 003611144-0001
to 0004

Made in Vancouver, Canada



ROUND

84.36

Design by Omer Arbel
PRODUCT INSTALLATION INSTRUCTIONS

© 2020, Bocci Design and Manufacturing Inc. All rights reserved. Any inquiries should be directed to: info@bocci.com

BOCCI

Tighten the screws until they bottom out on the hardware.

The pendant must rest its weight on the protruding screws.