

approx 2kg (4.5lb)

- PENDANTS: one
- MOUNTING: shallow white canopy 116mm (4.5") in diameter x 7mm (0.3") deep
- LAMPING: 1.5w LED (2500K or 3500K) / 10w xenon (2600K)
- COAX: adjustable. 3000mm (10') standard / up to 30500mm (100') maximum
- MATERIALS: blown glass, copper mesh, braided metal coaxial cable, electrical components, white canopy
- WEIGHT: approximately 2kg (4.5lb)
- POWER SUPPLIES: integral (power supply housed within junction box). Power supplies included

#### DESCRIPTION

The 84.1 shallow canopy is a single 84 pendant fixture with a shallow white canopy designed to fit over a new or existing 4" octagonal junction box. The canopy is 116mm (4.5") in diameter and 7mm (0.3") deep, which creates a subtle profile that minimizes the impact in the application surface. The pendant drop lengths on this light fixture are adjustable up to the specified maximum.

A white glass bubble is captured inside a fine copper mesh basket and then plunged into hot clear glass. Air is blown into the matrix to gently push the white glass through the mesh, creating a delicate pillowed form that is suspended inside the thick outer layer of clear glass. Sometimes the copper mesh basket folds and crinkles, adding specificity to each piece.

#### NOTES

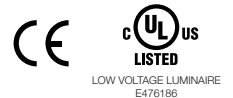
- + Purchase replacement lamps online at [www.bocci.com/shop/bulbs](http://www.bocci.com/shop/bulbs)
- + Unless otherwise noted when ordering, all fixtures will be outfitted to be xenon compatible
- + Please specify the colour temperature when ordering LED fixtures

US Patent Pending  
EU Patent # 003611144-0001 to 0004

Made in Vancouver, Canada

Vancouver  
[sales@bocci.com](mailto:sales@bocci.com)  
[www.bocci.com](http://www.bocci.com)

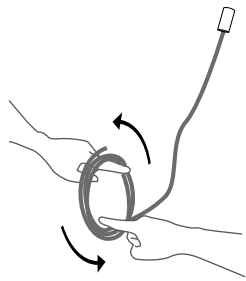
Berlin  
[europe@bocci.com](mailto:europe@bocci.com)  
[www.bocci.com](http://www.bocci.com)



SHALLOW CANOPY

# 84.1

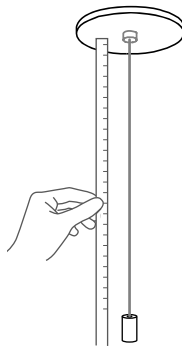
Design by Omer Arbel  
PRODUCT SPECIFICATION



1

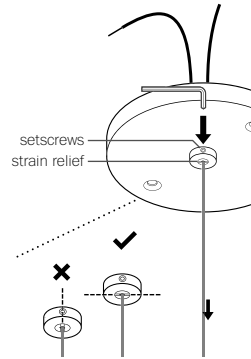
Very carefully uncoil the braided coaxial cable in a spool like manner. Insert your index fingers into opposite sides of the roll then rotate your fingers around each other to unroll the coaxial cable.

Use patience: allow the cable to uncoil completely to avoid kinks.



2

Determine the overall drop for the pendant fixture.



3

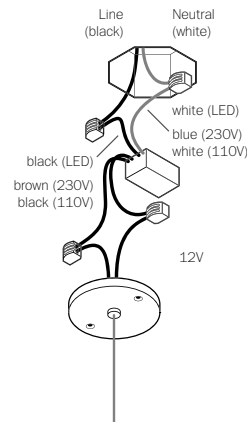
Thread the coaxial cable through the canopy, use a 2mm Allen key to loosen the setscrew in the canopy and gently feed the cable through until you have reached your desired drop length.

Use Allen key to tighten the setscrew to hold the strain relief and secure the coaxial cable at its new length. Perform a gentle tug test to ensure it is secure.

DO NOT OVERTIGHTEN.

Note: The strain relief is a black plastic collar around the coaxial cable. There is a single slot opening on the side of the strain relief component. It is essential that this opening is oriented at 90 degrees to set screw chamber. There can be no contact between the set screw and the cable.

RISK OF ELECTRIC SHORT!



4

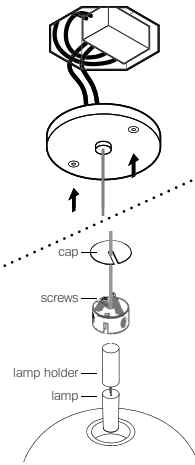
Xenon (110V) or LED: connect the black wire to black and white wire to white wire.

Xenon (230V): connect black wire to brown wire and white wire to blue wire.

Connect the coaxial cable to the open slots in the terminal block on the 12V side of the power supplies.

For multiple pendant installations, ensure that the braided outer wires are all connected to one 12V output wire and all inner insulated wires are connected to the other or a short will occur.

Once all coaxial connections are made, lift the fixture into position and connect the line voltage to the open slot in the appropriate terminal block.

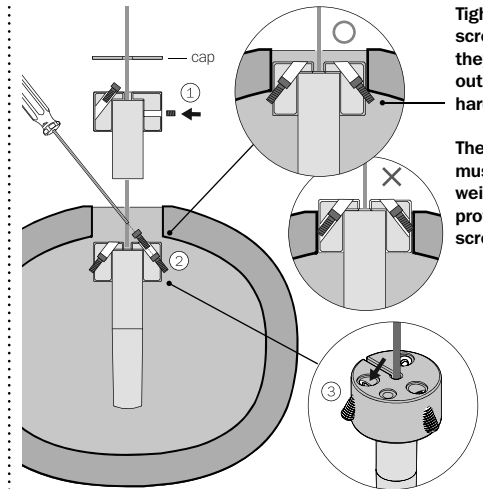


5

The client is responsible to ensure fasteners are attached to a robust structural substrate.

Tuck the power supply and wiring into the octagonal box, if available, and place canopy over top, lining up the fastener holes or connecting directly to structural ceiling surface. Affix canopy with fasteners provided.

Turn power to fixture on.



6

Step 1: Attach the lamp holder to the pendant hardware with set screw provided.

Plug the lamp into lamp socket. Do not touch the lamp with your bare hands. Ensure power to lamp is working correctly.

Step 2: Insert the pendant hardware assembly into the pendant.

Step 3: Tighten the 3 screws until they are fully engaged (refer to illustration above).

Give it a gentle pull to ensure the screws are locked onto the pendant.

Slide cover cap onto the coaxial cable and place into the inset portion of the pendant hardware.

Note: when using a dimmer use only low voltage electronic dimmer

Tighten the screws until they bottom out on the hardware.

The pendant must rest it's weight on the protruding screws.

7

Clean fingerprints from surfaces.

For additional assistance, please contact Bocci:

Vancouver  
sales@bocci.com  
www.bocci.com

Berlin  
europe@bocci.com  
www.bocci.com

US Patent Pending  
EU Patent # 003611144-0001  
to 0004

Made in Vancouver, Canada



SHALLOW CANOPY

84.1

Design by Omer Arbel  
PRODUCT INSTALLATION INSTRUCTIONS

© 2020, Bocci Design and Manufacturing Inc. All rights reserved. Any inquiries should be directed to: info@bocci.com

BOCCI