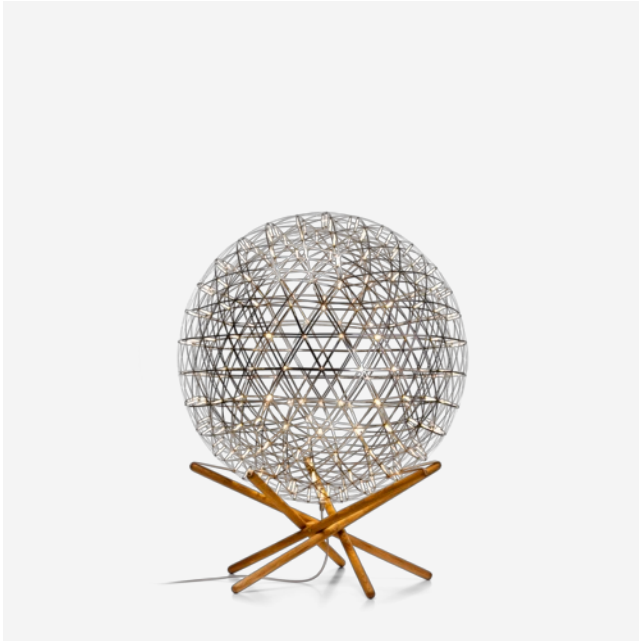


# Raimond Tensegrity

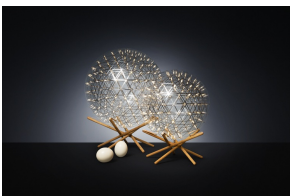
RAIMOND PUTS | REALISATION BY OX-ID



The Raimond light is a perfect sphere of mathematical ingredients punctuated by tiny LED lights. The Raimond is specially detailed to spread warm white light in every direction. Looking at the light feels like staring into the soft glow of a starry night. The Raimond Tensegrity compliments elegant metal with the sturdy earthiness of wood.

---

## *Detailing*



The interconnected wooden structure uses tension and pressure in order to retain its shape and carry the metal sphere.

---

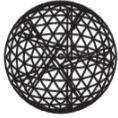
## *Colours*

Stainless steel

# Raimond Tensegrity / R61

## Dimensions

61cm | 24"



80cm | 31.5"

## Product

**WIDTH** 61cm | 24"

**HEIGHT** 80cm | 31.5"

**DEPTH** 61cm | 24"

**DIAMETER** 61cm | 24"

**WEIGHT NETTO** 10kg | 22.05lbs

## Packaging

**WIDTH** 75cm | 29.5"

**HEIGHT** 75cm | 29.5"

**CUBAGE** 0.42m<sup>3</sup> | 14.9ft<sup>3</sup>

**LENGTH** 75cm | 29.5"

**WEIGHT** 10kg | 22.05lbs

## Technical CE

### MATERIAL

Stainless Steel Sphere with PMMA lenses, wooden legs and leather straps

### ENERGY LABEL

### LIGHTSOURCE TYPE

LED

### LIGHTSOURCE INCLUDED

Yes

### NUMBER OF LIGHTSOURCES

162

### INPUT VOLTAGE

200-265

### FREQUENCY

50/60

### MAX POWER CONSUMPTION

35W

### DIMMABLE

Yes

### LAMPHOLDER

LED (Solid state)

### LIFETIME

50000 hours

### CABLE COLOUR

Transparent with tinned cores

### PLUG TYPE

Europlug (Type-C)

### CABLE LENGTH

500cm | 196.9"

### SWITCH

In line dimmer switch integrated in power supply housing

### COLOUR TEMPERATUE

2700 K

### CRI

71

### LIGHT OUTPUT

644 lm

### CONSTANT CURRENT / CONSTANT VOLTAGE

Constant voltage

### EEI

0.65

### EFFICIENCY

18.4 lm/W

**MEASURED POWER CONSUMPTION**

32.3W

---

*Technical CU***MATERIAL**

Stainless Steel Sphere with PMMA lenses, wooden legs and leather straps

**ENERGY LABEL****LIGHTSOURCE TYPE**

LED

**LIGHTSOURCE INCLUDED**

Yes

**NUMBER OF LIGHTSOURCES**

162

**INPUT VOLTAGE**

110-127

**FREQUENCY**

50/60

**MAX POWER CONSUMPTION**

35W

**DIMMABLE**

Yes

**LAMPHOLDER**

LED (Solid state)

**LIFETIME**

50000 hours

**CABLE COLOUR**

Transparent with tinned cores

**PLUG TYPE**

US plug (Type A)

**CABLE LENGTH**

500cm | 196.9"

**SWITCH**

In line dimmer switch integrated in power supply housing

**COLOUR TEMPERATUE**

2700 K

**CRI**

71

**LIGHT OUTPUT**

644 lm

**CONSTANT CURRENT / CONSTANT VOLTAGE**

Constant voltage

**EEI**

0.65

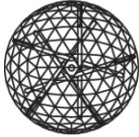
**EFFICIENCY**

18.4 lm/W

# Raimond Tensegrity / R89

## Dimensions

89cm | 35"



113cm | 44.5"

## Product

**WIDTH** 89cm | 35"

**HEIGHT** 113cm | 44.5"

**DEPTH** 89cm | 35"

**DIAMETER** 89cm | 35"

**WEIGHT NETTO** 16kg | 35.27lbs

## Packaging

**WIDTH** 104cm | 40.9"

**HEIGHT** 104cm | 40.9"

**CUBAGE** 1.12m<sup>3</sup> | 39.72ft<sup>3</sup>

**LENGTH** 104cm | 40.9"

**WEIGHT** 16kg | 35.27lbs

## Technical CE

### MATERIAL

Stainless Steel Sphere with PMMA lenses, wooden legs and leather straps

### ENERGY LABEL

Energy Label B

### LIGHTSOURCE TYPE

LED

### LIGHTSOURCE INCLUDED

Yes

### NUMBER OF LIGHTSOURCES

252

### INPUT VOLTAGE

200-265

### FREQUENCY

50/60

### MAX POWER CONSUMPTION

30W

### DIMMABLE

Yes

### LAMPHOLDER

LED (Solid state)

### LIFETIME

50000 hours

### CABLE COLOUR

Transparent with tinned cores

### PLUG TYPE

Europlug (Type-C)

### CABLE LENGTH

500cm | 196.9"

### SWITCH

In line dimmer switch integrated in power supply housing

### COLOUR TEMPERATUE

2700 K

### CRI

71

### LIGHT OUTPUT

790 lm

### CONSTANT CURRENT / CONSTANT VOLTAGE

Constant voltage

### EEI

0.47

### EFFICIENCY

26.33 lm/W

**MEASURED POWER CONSUMPTION**

29.8W

---

*Technical CU***MATERIAL**

Stainless Steel Sphere with PMMA lenses, wooden legs and leather straps

**ENERGY LABEL**

Energy Label B

**LIGHTSOURCE TYPE**

LED

**LIGHTSOURCE INCLUDED**

Yes

**NUMBER OF LIGHTSOURCES**

252

**INPUT VOLTAGE**

110-127

**FREQUENCY**

50/60

**MAX POWER CONSUMPTION**

39W

**DIMMABLE**

Yes

**LAMPHOLDER**

LED (Solid state)

**LIFETIME**

50000 hours

**CABLE COLOUR**

Transparent with tinned cores

**PLUG TYPE**

US plug (Type A)

**CABLE LENGTH**

500cm | 196.9"

**SWITCH**

In line dimmer switch integrated in power supply housing

**COLOUR TEMPERATUE**

2700 K

**CRI**

71

**LIGHT OUTPUT**

790 lm

**CONSTANT CURRENT / CONSTANT VOLTAGE**

Constant voltage

**EEI**

0.61

**EFFICIENCY**

20.26 lm/W

---

*Dimmer*

For fluent dimming behaviour we advise a dimmer that is compatible with the following specs.

**DIMMER TYPE**

Dimmer on power cord

Please note the functioning of the dimmer and the power supply combination can never be predicted, it always needs to be tested in practice.